



**WASHINGTON**  
STATE ASSOCIATION

# **Chapter Success Guide**

## **2023-2024**

## TABLE OF CONTENTS

Contact Information.....	3
Washington FCCLA Board of Directors .....	5
Washington FCCLA State Officers .....	6
Organizational Structure.....	7
Organizational Chart .....	9
Washington Regions .....	10
Washington FCCLA Regions .....	11
FCCLA Information and Facts.....	12
Events and Opportunities .....	14
Membership.....	15
Washington FCCLA Calendar of Events.....	17
Washington FCCLA State Campaigns .....	18
FCCLA National Campaigns .....	19
Washington FCCLA Recognition Opportunities .....	21
FCCLA National Programs .....	23
FCCLA Week .....	24
CTE Month.....	26
FCCLA Competitive Events .....	27
FCCLA Planning Process .....	28
Washington FCCLA Dress Code.....	30
Additional Resources and References .....	32
FCCLA Opening Ceremony .....	34
FCCLA Closing Ceremony .....	34
Washington FCCLA – Follow Us!!! .....	36

Washington FCCLA provides equal access to all programs and services without discrimination based on sex, race, creed, religion, color, national origin, age, honorably discharged veteran or military status, sexual orientation, gender expression, gender identity, the presence of any sensory, mental, or physical disability, or the use of a trained dog guide or service animal by a person with a disability.

## Contact Information

**Washington FCCLA – [www.wa-fccla.org](http://www.wa-fccla.org)**

### **Washington FCCLA**

PO Box 1440 | Owasso, OK 74055

Phone: 360.338.7721

### **Trent Misak**

Executive Director

Email: [executivedirector@wa-fccla.org](mailto:executivedirector@wa-fccla.org)

### **Vacant**

STAR Events Coordinator

Email: [competitiveevents@wa-fccla.org](mailto:competitiveevents@wa-fccla.org)

### **Mackenzie White**

State Officer Coach

Email: [coach@wa-fccla.org](mailto:coach@wa-fccla.org)

### **Ashley Radke**

Finance Office

Email: [washington@ctsofinance.org](mailto:washington@ctsofinance.org)

### **Ryan Underwood & Sean Robinson**

Senior Director

Email: [seniordirector@wa-fccla.org](mailto:seniordirector@wa-fccla.org)

**National FCCLA – [www.fcclainc.org](http://www.fcclainc.org)**

### **National Headquarters**

13241 Woodland Park Road, Suite 100 | Herndon, VA 20171

Phone: 703.476.4900

Email: [national@fcclainc.org](mailto:national@fcclainc.org)

### **FCCLA Store and Emblematic Supply Service**

Centricity – <https://fccla.mybrightsites.com/>

### **FCCLA Blazer Information**

<https://fccla.mybrightsites.com/pages/7985>

### **Family & Consumer Sciences**

**Washington Office of Superintendent of Public Instruction, Career and Technical Education,  
Family and Consumer Sciences Program**

<https://www.k12.wa.us/student-success/career-technical-education-cte/program-study-career-clusters-and-career-pathways/human-services>

**Michelle Spenser**

Family and Consumer Sciences Program Supervisor

Email: [michelle.spenser@k12.wa.us](mailto:michelle.spenser@k12.wa.us)

**Washington Family and Consumer Sciences Educators** <https://wafacse.org/>

**American Association of Family and Consumer Sciences** – [www.aafcs.org](http://www.aafcs.org)

### **Career & Technical Education**

**National ACTE** – [www.acteonline.org](http://www.acteonline.org)

**Washington ACTE** – <https://www.wa-acte.org/>

## Washington FCCLA Board of Directors

<u>Name</u>	<u>Office / Position</u>
<b>Clare Richards</b>	State President
<b>Molly Rose Bates</b>	Vice President of Finance
<b>Tricia Littlefield</b>	Chair, Parent Rep
<b>Kathi Hendrix</b>	Alumni Rep
<b>Shari Brink</b>	Chair-Elect, FCCLA Adviser- East
<b>Kari Brace</b>	FCCLA Adviser- West
<b>Maureen Collins</b>	WA-FACSE Rep
<b>Susan Grant</b>	Prof- Discipline
<b>Ariana Barrey</b>	Business & Industry Rep
<b>Maggie Jo Uceny</b>	Adviser to State President
<b>Michelle Spenser</b>	Treasurer, OSPI Program Superintendent
<b>Trent Misak</b>	Executive Director

## Washington FCCLA State Officers

<b><u>Name</u></b>	<b><u>School</u></b>	<b><u>Office / Position</u></b>
<b>Clare Richards</b>	Selah	State President
<b>Molly Rose Bates</b>	Lake Stevens High School	Vice President of Finance & Public Relations
<b>Arya Krishnamoorthy</b>	Issaquah High School	Secretary & VP of Parliamentary Procedure
<b>Kiryia Terry</b>	Royal High School	Vice President of Competitive Events and Programs
<b>Ziyon Marsh</b>	Tekoa High School	Vice President of Membership & Recognition
<b>Anna d'Hulst</b>	Ferris High School	Vice President of Community Service
<b>Serina Su</b>	Steilacoom High School	State Vice President of Region 3
<b>Namitha Reddy</b>	Skyline High School	State Vice President of Region 4
<b>Harini Arumugam Gandhimathi</b>	Lake Stevens High School	State Vice President of Region 5
<b>Brianna Urrutia</b>	Eastmont High School	State Vice President of Region 6
<b>Parker Casey</b>	Selah High School	State Vice President of Region 7
<b>Keira Caessens</b>	Pullman High School	State Vice President of Region 9
<b>Callie Hansen</b>	Mt. Spokane High School	State Vice President of Region 10

# Organizational Structure

## National Level

The national organization Family, Career and Community Leaders of America, Inc. (FCCLA), office is located in Reston, Virginia. Leadership is provided by national officers, the board of directors, and the national professional staff. The leadership, through the national headquarters office, gives direction to a national public relations program, supplies national publications, recommends programs for decision-making and personal growth, and provides pre and in-service training for advisers. The National Executive Council serves the membership as the youth decision-making body. The National Board of Directors serves the membership through representation of all phases of family and consumer sciences education. The national level of FCCLA includes every member of FCCLA in all 50 states, Washington, DC, Puerto Rico, the Virgin Islands, and Guam.

A copy of the national bylaws can be found on the national website:

<https://fcclainc.org/about/governance>

## National Regions Level

The national organization is divided into four regions: Central, North Atlantic, Pacific, and Southern. Washington is in the Pacific region.

## State Level

The Washington Association of FCCLA consists of local chapters within the state. State officers come from the ten regions. Each region elects two state officers. These officers serve as members of the executive council. Governance of the organization occurs through a board of directors. The members of the board of directors represent Career and Technical Education (CTE), school leadership, FCCLA advisers, Family and Consumer Sciences (FCS) teachers, FCCLA State President and Vice President of Finance, and FCS-related industry. Additional adult leadership is provided by the advisory board. Members of the advisory board include advisers to the state officers, the state adviser, the state president, and the state vice president of finance. The FCS supervisor at OSPI serves as chair of the advisory board.

The executive council and advisory board develop and implement a state program of work and provide leadership for state leadership conference and regional leadership meetings. They serve as an important link between the national and local levels.

A copy of the state level bylaws can be found on the state website: <https://wa-fccla.org/resources/>

## **Regional Level**

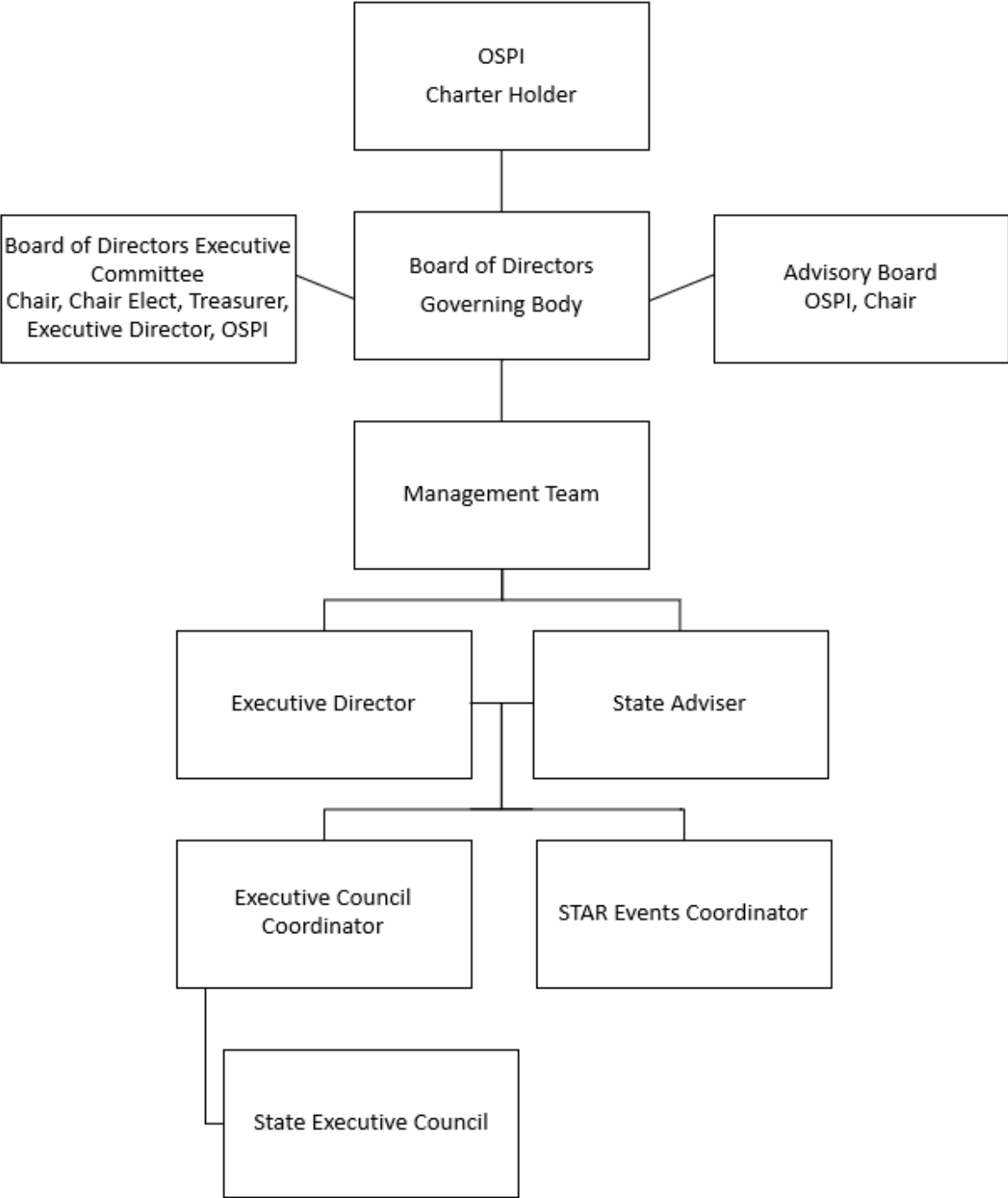
The state association of FCCLA is divided into ten regions. Each region has two state officers and their advisers. Fall and spring regional meetings and regional STAR Events are held annually.

## **Local Level**

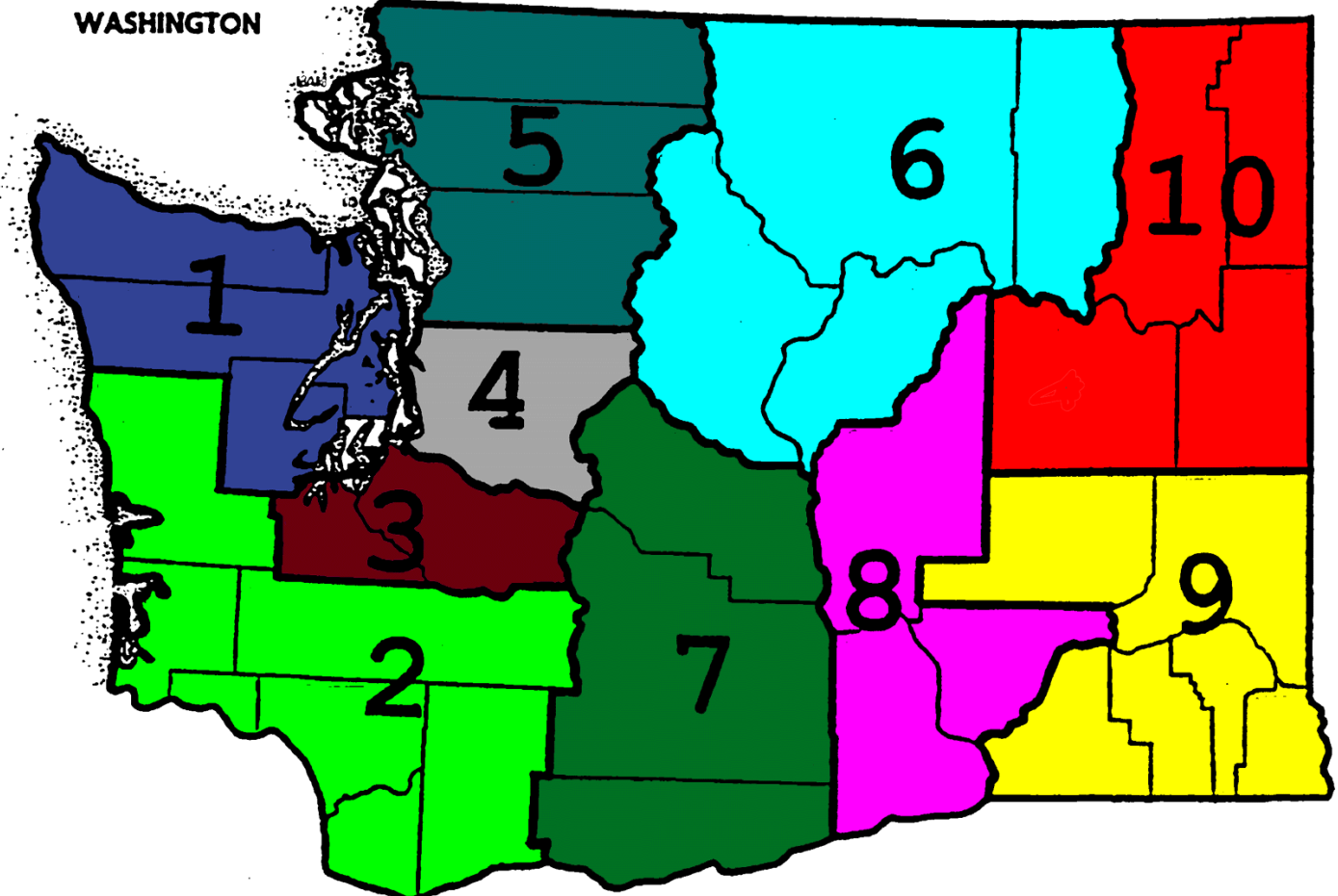
FCCLA chapters address preparation for those careers with recognition that workers fill multiple roles as family and community members as well as employees. The local chapters of FCCLA are made up of students who have taken or are taking a course in FCS. The FCS teacher serves as the adviser.



# Organizational Chart



Washington Regions



## Washington FCCLA Regions

Regions are composed of counties and portions of counties as described below:

**REGION 1:**

Kitsap, Clallam, Jefferson and Mason

**REGION 2:**

Grays Harbor, Pacific, Lewis, Wahkiakum, Cowlitz, Clark and Skamania

**REGION 3:**

Pierce and Thurston

**REGION 4:**

King

**REGION 5:**

Whatcom, Skagit, Snohomish, Island and San Juan

**REGION 6:**

Okanogan, Douglas, Chelan and Ferry  
Grand Coulee Dam, Quincey, Republic and Curlew School Districts

**REGION 7:**

Kittitas, Yakima and Klickitat

**REGION 8:**

Benton, Franklin and Grant,  
Columbia-Burbank and Othello School Districts

**REGION 9:**

Adams, Whitman, Asotin, Garfield, Columbia and Walla Walla

**REGION 10:**

Stevens, Pend Oreille, Spokane and Lincoln

## **FCCLA Information and Facts**

Family, Career, and Community Leaders of America is a nonprofit national career and technical student organization for young men and women in Family and Consumer Sciences education in public and private schools through grade 12. Everyone is part of a family and FCCLA is the only national Career and Technical Student Organization with the family as its central focus. Since 1945, FCCLA members have been making a difference in their families, careers and communities by addressing important personal, work and societal issues through Family and Consumer Sciences education.

Chapter projects focus on a variety of youth concerns, including teen pregnancy, parenting, family relationships, substance abuse, peer pressure, environment, nutrition and fitness, teen violence and career exploration. Involvement in FCCLA offers members the opportunity to expand their leadership potential and develop skills for life -- planning, goal setting, problem solving, decision making and interpersonal communication -- necessary in the home and workplace.

### **Mission**

To promote personal growth and leadership development through Family and Consumer Sciences education. Focusing on the multiple roles of family member, wage earner and community leader, members develop skills for life through character development, creative and critical thinking, interpersonal communication, practical knowledge and career preparation.

### **Motto**

Toward New Horizons

## Colors

The official colors of FCCLA are red and white. Red suggests strength, courage and determination; personal qualities leading to happiness through a positive self-image. White symbolizes sincerity of purpose and integrity of action; qualities that will help individuals build a better tomorrow.

### National Logo



### Washington Logo



## FCCLA Purposes

- 1.To provide opportunities for personal development and preparation for adult life.
- 2.To strengthen the function of the family as a basic unit of society.
- 3.To encourage democracy through cooperative action in the home and community.
- 4.To encourage individual and group involvement in helping achieve global cooperation and harmony.
- 5.To promote greater understanding between youth and adults.
- 6.To provide opportunities for making decisions and for assuming responsibilities.
- 7.To prepare for the multiple roles of men and women in today's society.
- 8.To promote Family and Consumer Sciences and related occupations.

## Events and Opportunities

### Region Fall Meetings

Information regarding these meetings will be available on the website as available: <https://wa-fccla.org/conferences/#fallregional>

### Capitol Leadership – October 9-11, 2023 – Washington, D.C.

Capitol Leadership is a great opportunity to come together with youth leaders across the nation to use their voice and share their passion to meet with congressional leaders and promote Career and Technical Education (CTE) and Family and Consumer Sciences (FCS) education for every student in every state in every school.

### National Fall Conference – November 10-12, 2023 – Birmingham, AL

NFC is a great opportunity to come together with members and advisers across the nation to network, expand your leadership skills, sharpen your talents, and explore National Programs and Career Pathways.

### Chapter Adviser Summit – January 25-27, 2024 – Seattle, WA

The FCCLA Chapter Adviser Summit (CAS) provides professional development opportunities designed specifically for Family and Consumer Sciences education teachers looking to excel in the classroom and in FCCLA. The CAS is developed and led by FCCLA's National Staff and the National Consultant Team. Attendees will receive up-to-date professional development training, share ideas, and network with other chapter advisers from across the nation.

### State Leadership Conference (SLC) – March 5-8, 2024 – Spokane, WA

Don't miss out on the culminating event of the year for Washington FCCLA—State Leadership Conference! Take part in STAR Events, attend workshops, network with members, elect the 2024-2025 State Executive Council, and so much more.

### National Leadership Conference (NLC) – June 29- July 3, 2024 – Seattle, WA

While at NLC, FCCLA members will compete in National STAR Events, take part in unique leadership trainings, gain recognition for participation in FCCLA programs, help elect the 2024-2025 National Executive Council, and enjoy tours, social events, and opportunities to make memories that last a lifetime!

Please review the 2023-2024 Washington FCCLA Calendar of Events for more details on events, deadlines, locations, and instructions for activities. This calendar can also be found on the Washington FCCLA website under the [Resources](#) drop down menu.

# Membership

Since 1945, students and their advisers have focused on better supporting their families, careers, and communities by taking part in FCCLA. Last year, Washington FCCLA reached a total membership of over 6,000, with 117 affiliated chapters.

Increasing membership is a top priority this year. With that as a goal, the Washington FCCLA State Officers invite you to join with them as they continue to utilize the 3 R's of Membership! We encourage you to Recruit, Retain and Recognize your members. We are encouraging members to scout out their school to find new members and reach our state membership goal. Please spread the word about this amazing organization and help others take part in the benefits FCCLA has to offer!

## Chapter Membership

To be considered an active FCCLA chapter, all chapters are **required to register 12** members and 1 adviser on their affiliation roster. Those chapters that do not have 12 members registered will not be recognized as active chapters and will not be allowed to participate in STAR Events or Leadership Conferences. Please contact the management team with any questions regarding this policy.

## Affiliation Dues and Payment

National FCCLA affiliation dues are \$9 per member/adviser and Washington FCCLA affiliation dues are \$11 per member/adviser, for a total of \$20 per member/adviser. The affiliation dues provide access to National FCCLA communications, National Programs, leadership conferences, competitive events, membership cards, and exclusive membership promotions. Payments must be received at the National Office for chapters to be considered an active chapter (POs are not payment!).

Washington does participate in the national FCCLA membership packages. You can find additional information on what is offered as part of these packages on the national website: <https://fcclainc.org/join/membership-packages>.

- Up to 25 members: \$395 for national, \$275 for state; **Total \$670 (regular price per student after 25)**
- Unlimited package: \$775 for national, \$900 for state; **Total \$1,675**
- Junior High and Middle-Level Unlimited: \$250 for national, \$300 for state; **Total \$550**

## Affiliation Process

The membership affiliation system will be the same as previous years. To register your chapter by visiting <https://affiliation.registermychapter.com/fccla#> . (You can also find the link by going to the national website, fcclainc.org, and clicking the login button in the top ribbon).

Advisers can find resources for the affiliation portal including a step-by-step guide on the national website as well as a member affiliation information form.

<https://fcclainc.org/join/chapter-affiliation>

If you have any questions on the affiliation system, please email [hello@wa-fccla.org](mailto:hello@wa-fccla.org).

## Membership Types

Level 1 – through grade 8

Level 2 – grades 9-10

Level 3 – grades 11-12

## Alumni & Associates

Any former member that is no longer in a secondary program is encouraged to join as an **Alumni** member! Alumni members have the rights and privileges of active members except the right to vote, hold office, and compete in STAR Events. **Associate** members are friends of FCCLA that were never active members in a secondary or postsecondary program.

Visit <http://fcclainc.org/membership/alumni--associates.php> for information on joining the Alumni & Associates for FHA, FHA HERO, and FCCLA.





## **Washington FCCLA Calendar of Events 2023-2024**

<b>Date(s)</b>	<b>Event – Location</b>
August 1	2023-2024 Affiliation Opens
October 9-11	Capitol Leadership – Washington DC
November 1	1st National Affiliation Deadline
November 10-12	National Fall Conference – Birmingham, AL
November 14	WA FCCLA Board of Directors
November 14-15	WA FCCLA Winter Exec – Spokane, WA
January 24	State Leadership Conference Registration Deadline
January 25-28	Chapter Adviser Summit – Seattle, WA
January 26	Affiliation Deadline for participation at SLC
January 26	State Leadership Conference Registration Deadline- Late
January 26	Accomplishment Ribbon Deadline
February 2	State/National Officer Candidate Application Deadline
February 2	WA Honorary Membership Application Deadline
	WA Hall of Fame Application Deadline
	WA Scholarship Application Deadline
	WA Spirit of Advising Recommendation Deadline
February 15	SLC Recognition Deadline-Adviser Mentor Application
	SLC Recognition Deadline- Master Adviser Application
March 1	National Program Award Application Deadline
	National Adviser Mentor Award Application Deadline
	National Master Adviser Award Application Deadline
	National Chapter Public Relations Award Deadline
	National STAR Events Volunteer Award Deadline
	National Educated Adviser Award Deadline
	National Alumni Achievement Award Deadline
	National Honorary Membership Award Deadline
	National School Administrator Award Deadline
March 5-8	WA FCCLA State Leadership Conference – Spokane, WA
May 19-22	WA State Officer Leadership Training (SOLT)
June 29- July 3	National Leadership Conference – Seattle, WA

## Washington FCCLA State Campaigns

### State Theme: The Ultimate Journey: Discover the Possibilities

This year our state theme follows National FCCLA. Washington FCCLA, let's discover the possibilities!



### State Campaigns

The Washington FCCLA State Officer team is excited to support members across the state this term. Officers have many plans for the upcoming year, including a state wide community service project helping local food banks, conducting chapter visits, and recognizing members. In addition to social media, the monthly Red Report and Red Reach Podcast will be a resources all members can refer to for more information regarding all of the fun events happening in the great state of Washington!

## FCCLA National Campaigns

### National Outreach Project: Lead4Change

The Lead4Change Student Leadership Program is the nation's leading and fastest growing free student leadership program. Over the last 10 years, over 1.5 million students have worked through the Lead4Change program to learn leadership skills that help them make a difference in their communities. Create a more rewarding year for you and your students with the free Lead4Change program.

Since FCCLA's partnership with Lead4Change started in 2015, FCCLA students have donated more than 180,000 volunteer hours in many service areas, including children, seniors, animals, schools, communities and global initiatives. When you enroll in Lead4Change, you'll join thousands of others who've put their leadership skills to work to make the world a better place!

Visit <https://new.lead4change.org/> for more information and to register for your free resources today!



## **National Membership Campaign: Go For The Red!**

In addition to the state membership campaign, National FCCLA is continuing the **Go for the Red** Campaign for the 2023-2024 school year. Members and chapters will have the opportunity to Recruit, Retain, and Recognize! Members will be able to showcase their recruiting skills on the individual and chapter levels.

Look for your **Go for the Red** materials to arrive in your chapter's membership kit and online on the National FCCLA website!

Prizes for recruitment success include cash prizes and FCCLA store vouchers! Visit the FCCLA national website to learn more <https://fcclainc.org/join/go-red>.



## **National Membership Campaign: Alumni & Associates**

Alumni & Associates membership is for those who were previously part of FCCLA or those who support the mission and purposes of the organization. Members of A&A will receive newsletters and extend their support of FCCLA.

To register in the state alumni database and be contacted to assist at conferences, present workshops, judge STAR events, etc., <https://trileadership.wufoo.com/forms/oregon-fccla-alumni-form>/be sure to add your name to our list! Visit our Alumni page at <https://fcclainc.org/join/alumni-associates>.



To register alumni for membership in the National A&A division, visit <https://affiliation.registermychapter.com/fccla/alumnilogin#>.

# Washington FCCLA Recognition Opportunities

## Honorary Membership

Honorary memberships are a special way of recognizing individuals who have supported, made significant contributions, and/or promoted Family, Career and Community Leaders of America and family and consumer sciences education. Honorary memberships may be awarded at the state or chapter level.

## Hall of Fame

Hall of Fame recognition is a special way of acknowledging individuals who have dedicated, made significant contributions, and legacy in FCCLA in state of Washington.

## Scholarships

Washington FCCLA offers two \$1,000 scholarships to active FCCLA members who have achieved academic excellence. There are three categories of scholarships offered:

- Applicants who plan to major in FCS.
- Applicants who plan to prepare for a FCS-related occupation.
- Applicants currently in a university, community, or technical college planning to enter FCS as a major.

The scholarships are awarded in the names of:

Anita Worth Berry  
Laura E. McAdams  
Dean Velma Phillips  
Ailsie M. Stevenson  
Grace G. Granberg

## Years of Service

Years of Service recognizes chapter advisers for their years of service as an adviser to a local chapter. Years are recognized in increments of 5 years. Data is pulled from the national affiliation portal, so be sure to keep that up-to-date each year.

## Master Adviser/Adviser Mentor

Master Adviser recognizes advisers who have been successful in advising an affiliated chapter for a minimum of three years, promoting the organization, operating an integrated chapter with a balanced program of work, facilitating youth-centered activities, and keeping abreast of new happenings within the organization.

Adviser Mentor recognizes advisers who have been successful in achieving Master Adviser Recognition, devoting two years to new adviser assistance, assuming adult leadership roles in FCCLA, and conducting adviser workshops, attending training workshops, and using national and state FCCLA resources.

## **Spirit of Advising**

Spirit of Advising recognizes chapter advisers who are constantly faithful, often quietly working behind the scenes to ensure the success of their students. Nominations are accepted through an informal process by emailing [stateadviser@wa-fccla.org](mailto:stateadviser@wa-fccla.org).

## **Additional Information and Forms**

Additional information and application forms can be found on the website: <https://wa-fccla.org/awards-and-recognition/>



# FCCLA National Programs

FCCLA national programs were developed to build and strengthen students' leadership skills.

	<b>Career Connection</b> The FCCLA Career Connection national peer education program helps members discover their career path in four units: My Skills, My Life, My Career, and My Path.	
	<b>Community Service</b> Community Service features three units that help guide young people to learn about themselves so they can learn, lead, and serve others.	
	<b>Families Acting for Community Traffic Safety (FACTS)</b> FACTS is a national peer education program where members create projects that strive to save lives through personal, vehicle, and road safety.	
	<b>Families First</b> Families First is a national peer education program through which youth gain a better understanding of how families work and learn skills to become strong family members.	
	<b>Financial Fitness</b> Financial Fitness is a national peer education program involving youth teaching one another how to earn, spend, save, and protect money wisely.	
	<b>Power of One</b> Power of One helps students find and use their personal power. Members set their own goals, work to achieve them, and enjoy the results.	
	<b>Stand Up</b> FCCLA's Stand Up program guides members to improve the quality of life in their communities through assessment, education, and advocacy, using their voice to create change.	
	<b>Student Body</b> The FCCLA Student Body national peer education program helps young people discover the Healthy You, the Fit You, the Real You, and the Resilient You.	

**Additional Information** can be found on the national website:

<https://fcclainc.org/engage/national-programs>

**Program Award Applications:** Applications are due by March 1 and information and instructions can be found online at: <https://fcclainc.org/engage/national-programs/awards-contests>





## **FCCLA Week**

Join FCCLA members, advisers, and supporters from across the country from February 12-16, 2024, in a nationwide celebration of all things FCCLA! Also, be sure to use **#FCCLAWeek** on social media to join the conversation!

### **Monday – February 12**

#### **FCCLA Member Monday**

*Kick off FCCLA week by highlighting chapter members and sharing what FCCLA means to you. #FCCLAWeek*

### **Tuesday – February 13**

#### **FCCLA Day of Service**

*Serve your community with leadership skills and a positive attitude, and share how your acts of service have made a difference in the world around you. #FCCLAWeek*

### **Wednesday – February 14**

#### **FCS Educator Day**

*Take time to thank the educators in your life who have inspired and taught you valuable skills through Family and Consumer Sciences education. Show appreciation for all they have done for you and your chapter. #FCCLAWeek*

### **Thursday – February 15**

#### **FCCLA Alumni Day**

*Celebrate your chapter's alumni and the impact of FCCLA on their lives and careers. Encourage alumni to share their experiences and stay connected with FCCLA as proud supporters of the organization's mission. #FCCLAWeek*

### **Friday – February 16**

#### **FCCLA Spirit Day**

*Get ready to show off your FCCLA spirit! Dress up in red and celebrate how FCCLA has made a positive impact on your life. #FCCLAWeek*

## CTE Month

February is also Career and Technical Education Month, and the Association of Career and Technical Education would love for you to be part of it! For more information visit <https://www.acteonline.org/>

Make sure you document and publicize your projects; reference the [\*FCCLA Branding and Promotion Guide\*](#) for tips and resources. Submit pictures and a brief description using the spotlight submission form found on this site: <https://fclclinc.org/communications>. Also, be sure to submit your pictures and a brief description with us to get published on Washington FCCLA social media and the state website! A submission form can be found here: <https://wa-fccla.org/latest-news/>.



## FCCLA Competitive Events

Family, Career, and Community Leaders of America (FCCLA) offers various competitive events to students that provide opportunities to advance their career and college readiness skills.



**STAR Events (Students Taking Action with Recognition)** recognize members for proficiency and achievement in chapter and individual projects, leadership skills, and career preparation. STAR Events offer individual skill development and application of learning through cooperative, individualized, and competitive activities.

**2023-2024 Competitive Events Guide** is available in the National FCCLA affiliation portal. Please review the guidelines carefully with your students as you prepare for competition.

**STAR Event Demonstration Videos** filmed during the 2013 National Leadership Conference are available through the National FCCLA YouTube and SchoolTube channels.

**Where do I find STAR Event Resources and Scenarios?** The STAR Events Resources page (<https://fcclainc.org/compete/star-events>) contains general resources for STAR Events. Additional resources can be found in the competitive events guide and within the affiliation portal under Resources and Competitive Events. It is important that members use the current year's (2022-2023) scenario or topic when preparing for STAR Events. When in doubt, email [competitiveevents@wa-fccla.org](mailto:competitiveevents@wa-fccla.org) with your questions.

**Skill Demonstration Events (held at National Fall Conference)** these events provide opportunities for members to demonstrate college and career-ready skills in Family and Consumer Sciences and related occupations. These competitions take place at National Fall Leadership Conference. Additional information can be found on the national website: <https://fcclainc.org/compete/skill-demonstration-events>

**FCCLA/LifeSmarts Knowledge Bowl** FCCLA/LifeSmarts Knowledge Bowl is a multi-level, team competition that challenges students' knowledge of all aspects of Family and Consumer Sciences:

- Personal Finance
- Consumer Rights and Responsibilities (to include Family, Career and Community studies)
- Technology (to include Fashion and Housing Design)
- Health & Safety (to include Food Sciences & Nutrition and Early Childhood & Human Development)
- Environment (to include Hospitality, Tourism, & Recreation)
- FCCLA Knowledge

Additional information can be found on the national website:

<https://fcclainc.org/compete/fcclalifesmarts-knowledge-bowl>

**FCCLA/Knowledge Matters Simulations** The FCCLA/Knowledge Matters Virtual Business Challenges (Personal Finance and Fashion) encourage members to test their personal finance or fashion management skills. This competition consists of two competition rounds (fall and spring). Additional information can be found on the national website:  
<https://fcclainc.org/compete/fcclaknowledge-matters-simulations>

**Up-to-date competitive events information** can be found on the national website:  
<https://fcclainc.org/compete>



## FCCLA Planning Process



### Identify Concerns

- Brainstorm concerns
- Evaluate listed concerns
- Narrow to one workable idea or concern



### Set A Goal

- Get a clear mental picture of what you want to accomplish
- Write it down
- Evaluate it



### Form a Plan

- Plan how to achieve your goal
- Decide who, what, where, when, why, and how



### Act

- Carry out project



### Follow Up

- Evaluate project
- Thank people involved
- Recognize participants

## Washington FCCLA Dress Code

FCCLA members and advisers are representing an outstanding student organization and should project the image of a leader. Attendees at state and national meetings are required to adhere to the mandatory dress policy listed below. This policy applies to all state meetings for students, advisers, and guests in attendance. Advisers are responsible for enforcing the dress policy with their students. Delegates and guests not adhering to the dress policy will not be admitted into sessions.

*It should be noted that the official FCCLA uniform is always acceptable and encouraged for members during FCCLA events.*

### Session/Workshop Dress

#### Delegates

- Red, Black, or white polo or oxford shirt (long or short sleeves)\*
- Black dress slacks/pants/capris (no shorts)
- Black or khaki skirts – no shorter than 2 inches above the knee
- Black Sheath dress
- Dress shoes
- Jeans, leggings, t-shirts, athletic wear are NOT acceptable.

\*Please note that shirts do NOT need to be FCCLA logo branded

#### Advisers/Chaperones/Guests

- Business casual (including dress capris)
- Jeans, leggings, t-shirts, athletic wear are NOT acceptable.

If there are members that cannot meet this dress code for financial reasons, please speak with the Executive Director to problem solve prior to conference.

#### SLC Wednesday Night Activity

\*\*Dress for the Wednesday night activity will be business casual (no jeans, sweats, shorts). The conference t-shirt with black or khaki slacks are fine.

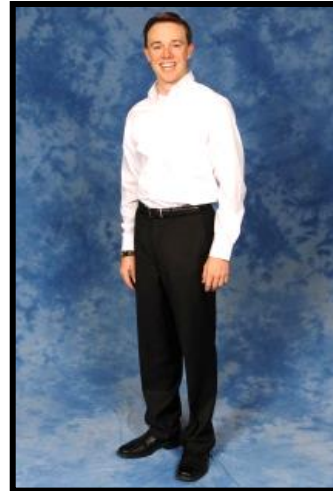
#### SLC Banquet Dress

Dress for the banquet is semi-formal/formal

#### Conference T-shirt

A t-shirt is included with the SLC conference registration. The shirts will have the conference theme logo printed on them. The conference t-shirt may be worn at SLC – Wednesday evening only with black or khaki slacks, starting with dinner through the Spring Regional meetings and Wednesday night activity.

**Examples of appropriate dress:**



*For more information on the National FCCLA Dress Code, please visit <https://fcclainc.org/attend/dress-code>.*

## Additional Resources and References

### Available from State Office ([www.wa-fccla.org](http://www.wa-fccla.org))

- Washington Chapter Accomplishment Ribbon Application (available with State Leadership Conference Information)
- Sample certificates (<https://wa-fccla.org/resources/>)
- Sample Forms (<https://wa-fccla.org/resources/>)
- Sample Year at a Glance (<https://wa-fccla.org/resources/>)
- Program of Work Resources (<https://wa-fccla.org/resources/>)
- Washington FCCLA Calendar of Events (<https://wa-fccla.org/calendar-of-events/>)
- State Officer Candidate Guide (<https://wa-fccla.org/run-for-state-office/>)
- State Leadership Conference Registration Guide (<https://wa-fccla.org/state-conferences-events/>)
- Washington Code of Conduct (<https://wa-fccla.org/resources/>)

### Available from National Office ([www.fcclainc.org](http://www.fcclainc.org))

- National Program Information (<https://fcclainc.org/engage/national-programs>)
- Master Adviser/Adviser Mentor Information (<https://fcclainc.org/lead/advisers/awards>)
- National Fall Conference Information (<https://fcclainc.org/attend/national-fall-conference>)
- National Officer Information (<https://fcclainc.org/lead/national-officers>)
- National Leadership Conference Information (<https://fcclainc.org/attend/national-leadership-conference>)
- Adviser Resource (<https://fcclainc.org/advisers>):
  - New Adviser Handbook
  - New Chapter Checklist
  - Step One WebQuest and Certificate
  - Branding Guidelines

### Available from National Affiliation Portal

(<https://affiliation.registermychapter.com/fccla#>)

IMPORTANT: You MUST affiliate (pay invoice) by November 1 to maintain access to many of these resources

- Chapter Membership
- Previously recorded webinars (Resources tab>Adviser Professional Development)
- Downloadable FCCLA logos (Resources Tab>Communications)
- National Competitive Events Guide (Resources Tab>Competitive Events) (Available September)
- Lesson Plans (Resources Tab)
- Chapter Resources (Resources Tab>Membership)
  - Introductory PowerPoint
  - Career Pathways
  - Membership Recruitment/Kit



- Chapter Manual
- Program Integration
- Power Of One (Resources tab>Programs/Partnerships)
- Downloadable FCCLA Planning Process (Resources tab>Programs/Partnerships)



## FCCLA Opening Ceremony

### President:

Gives a rap with the gavel signaling the officers and members to stand and says: “We are members of Family, Career and Community Leaders of America. Our mission is to promote personal growth and leadership development through Family and Consumer Sciences education.”

### Officers:

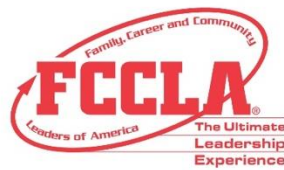
“Focusing on the multiple roles of family member, wage earner and community leader, members develop skills for life through character development, creative and critical thinking, interpersonal communication, practical knowledge and career preparation.”

### Members:

“As we work toward the accomplishment of our goals, we learn cooperation, take responsibility, develop leadership and give service.”

### President:

“This meeting of the \_\_\_\_\_ Chapter of Family, Career and Community Leaders of America is now in session. You may be seated.”



## FCCLA Closing Ceremony

### President:

"Members, please stand."

"FCCLA members, we are challenged to accept the responsibility of making decisions that affect our lives today and the world tomorrow. Let us repeat our Creed."

### Members:

[Repeat Creed]

### CREED:

We are the Family, Career and Community Leaders of America.

We face the future with warm courage and high hope.

For we have the clear consciousness of seeking old and precious values.

For we are the builders of homes,

Homes for America's future,

Homes where living will be the expression of everything that is good and fair,

Homes where truth and love and security and faith will be realities, not dreams.

We are the Family, Career and Community Leaders of America.

We face the future with warm courage and high hope.

### President:

"This meeting of the \_\_\_\_\_ Chapter of Family, Career and Community Leaders of America is now adjourned." [Rap gavel once.]

## Washington FCCLA – Follow Us!!!



[@WashingtonFCCLA](https://www.facebook.com/WashingtonFCCLA)



[@WashingtonFCCLA](https://www.instagram.com/WashingtonFCCLA)



[@WashingtonFCCLA](https://www.x.com/WashingtonFCCLA)

Visit [www.wa-fccla.org](http://www.wa-fccla.org)  
for more information!